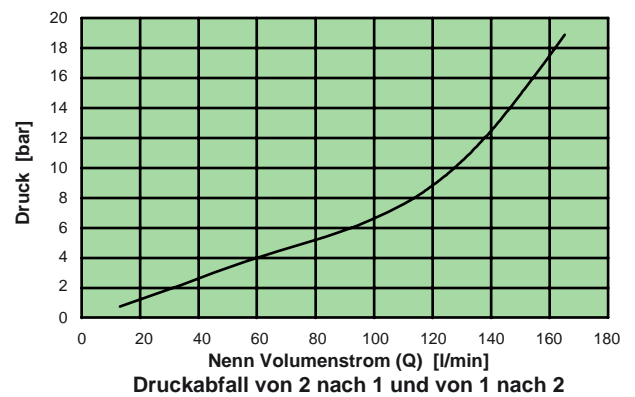
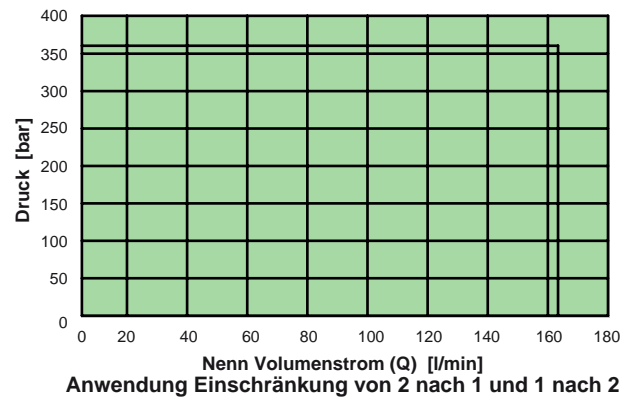
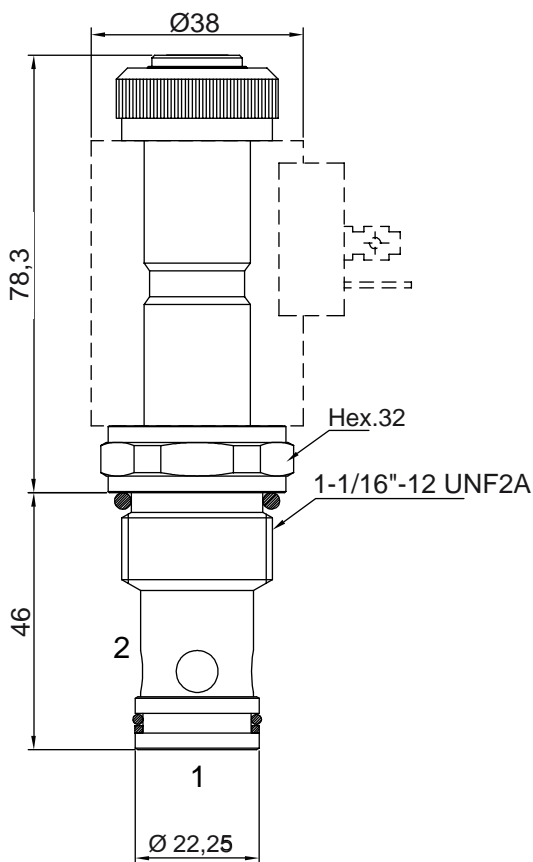
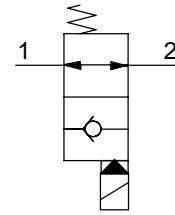


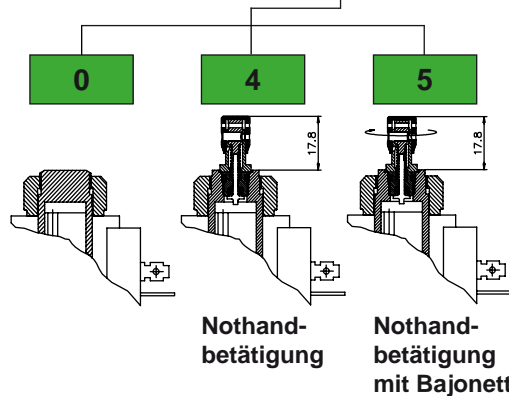
2/2 WEGESITZVENTIL, DIREKT BETÄTIGT, NORMAL OFFEN

- Nenn Volumenstrom (Q) ..... **150 l/min**
- Max Arbeitsdruck (P) ..... **350 bar**
- Leckage ..... **0,25 cc/min**
- Dichtungen ..... **NBR**
- Einbauraum ..... **C240000**
- Anzugsdrehmoment ..... **50 Nm**
- Ringmutter Anzugsdrehmoment ..... **5 Nm**
- Gewicht (mit Magnet) ..... **0,58 Kg**
- Magnet **CT-9801** bitte separat bestellen



Typenschlüssel

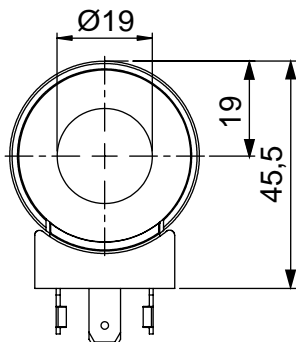
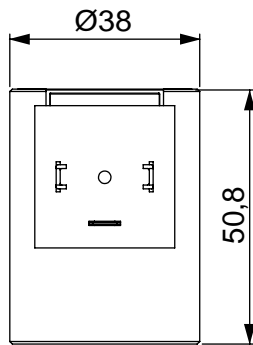
0 5 6 4 0 0 0 0 0 0



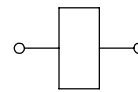
Magnet - Kern Ø 19

24 W

- Isolierstoffklasse ..... H (>185°C)
- Betriebsart ED ..... 100%
- Magnet-Kraft bei 20° C ..... 24 W
- Arbeits Temperaturbereich ..... -20 +40° C
- Gewicht ..... 0,28 Kg



Elektrischer Kreislauf

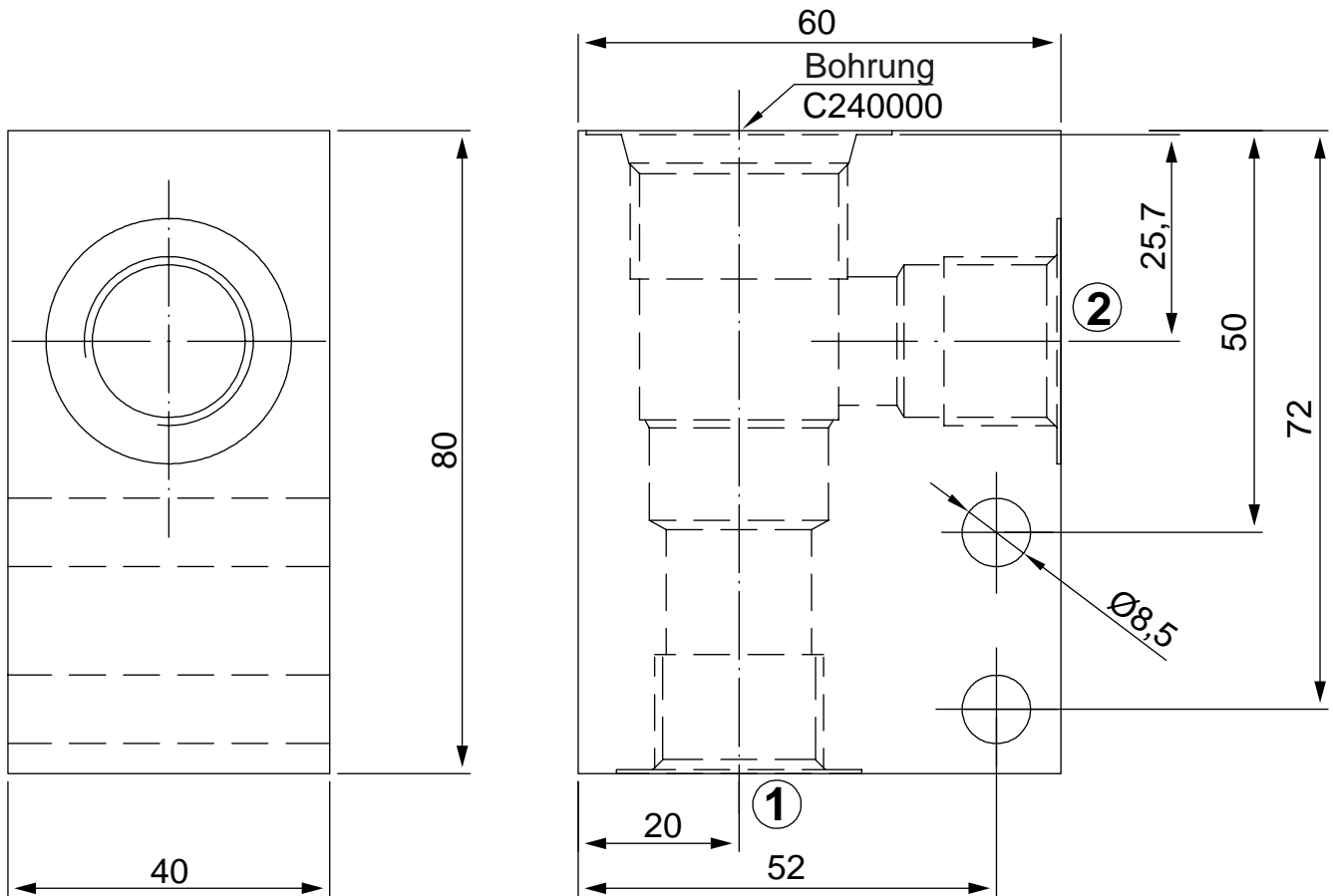


STANDARD

Stecker	Schutzart nach DIN VDE 0470/ EN 60529	Magnet Isolierstoff-klasse	Spannung [V]	Widerstand [Ω]	Kreislauf	Bestell-Nr. 5DHY-
DIN 43650	IP65*	H	12 V dc	6,8	STANDARD	<b>098011190</b>
DIN 43650	IP65*	H	24 V dc	24	STANDARD	<b>098012190</b>
DIN 43650	IP65*	H	26 V dc	27,1	STANDARD	<b>098012191</b>

\* Schutzart mit Standard-Stecker

Standard Gehäuse für Leitungseinbau



Artikel Nr.

